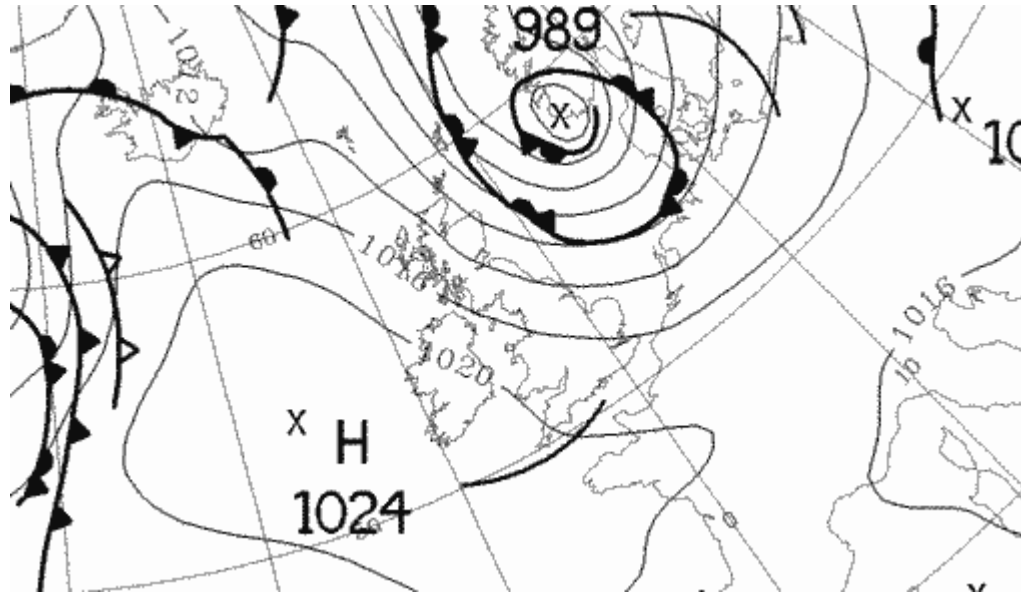


# DATE: 30<sup>th</sup> August 2011

## Day Classification: Gradient driven with delayed sea breeze

Air temperature:  
16-17 Celsius

Weather:



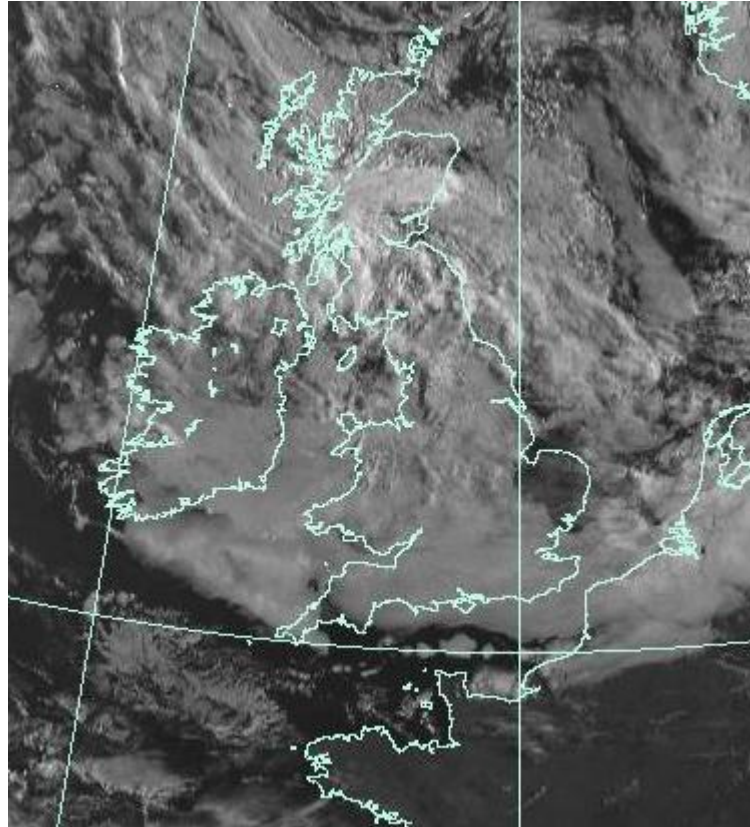
Low pressure dominates the area maintaining a moderately unstable WNW airflow

**GRADIENT WIND: 330-360 06-08 becoming VRB  
03, mainly 140-160**

Overcast cloud will be slow to break.

Some breaks developing late morning early afternoon

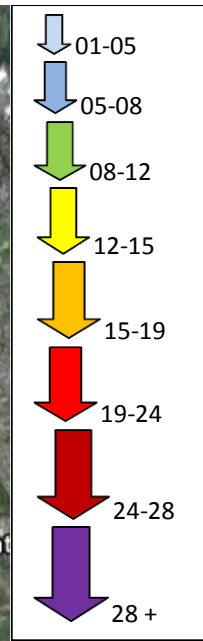
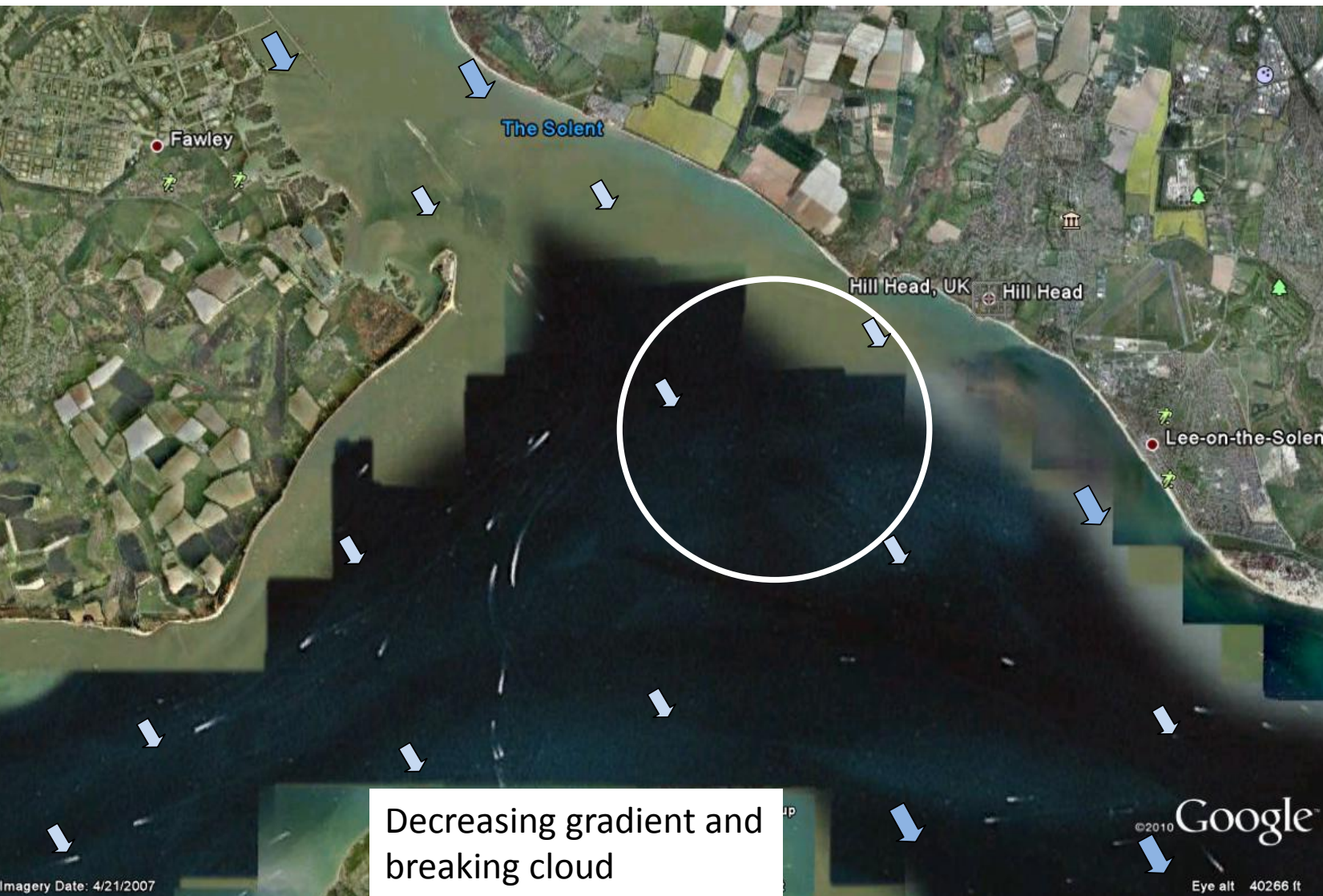
Gradient driven conditions will dominate until cloud breaks





1000-1200

320-350 04-07 locally 09



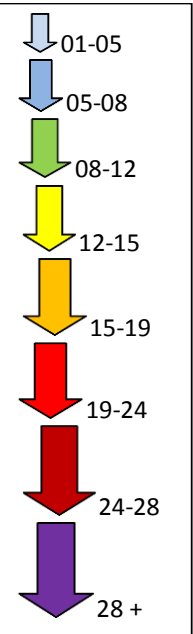
1200-1400

320-350 04-07



1400-1600

140-170 02-05 on course



1600-1800

140-170 04-07

# KEY POINTS/UNCERTAINTY

- Spring tides will dominate today
- Decaying gradient conditions will hold for longest along shoreline- so potentially defend LEFT
- Typical timing of sea breeze development and establishment, 1500-1530
- Uncertain as to when and how strong the sea breeze will develop- highly dependant on cloud breaking